

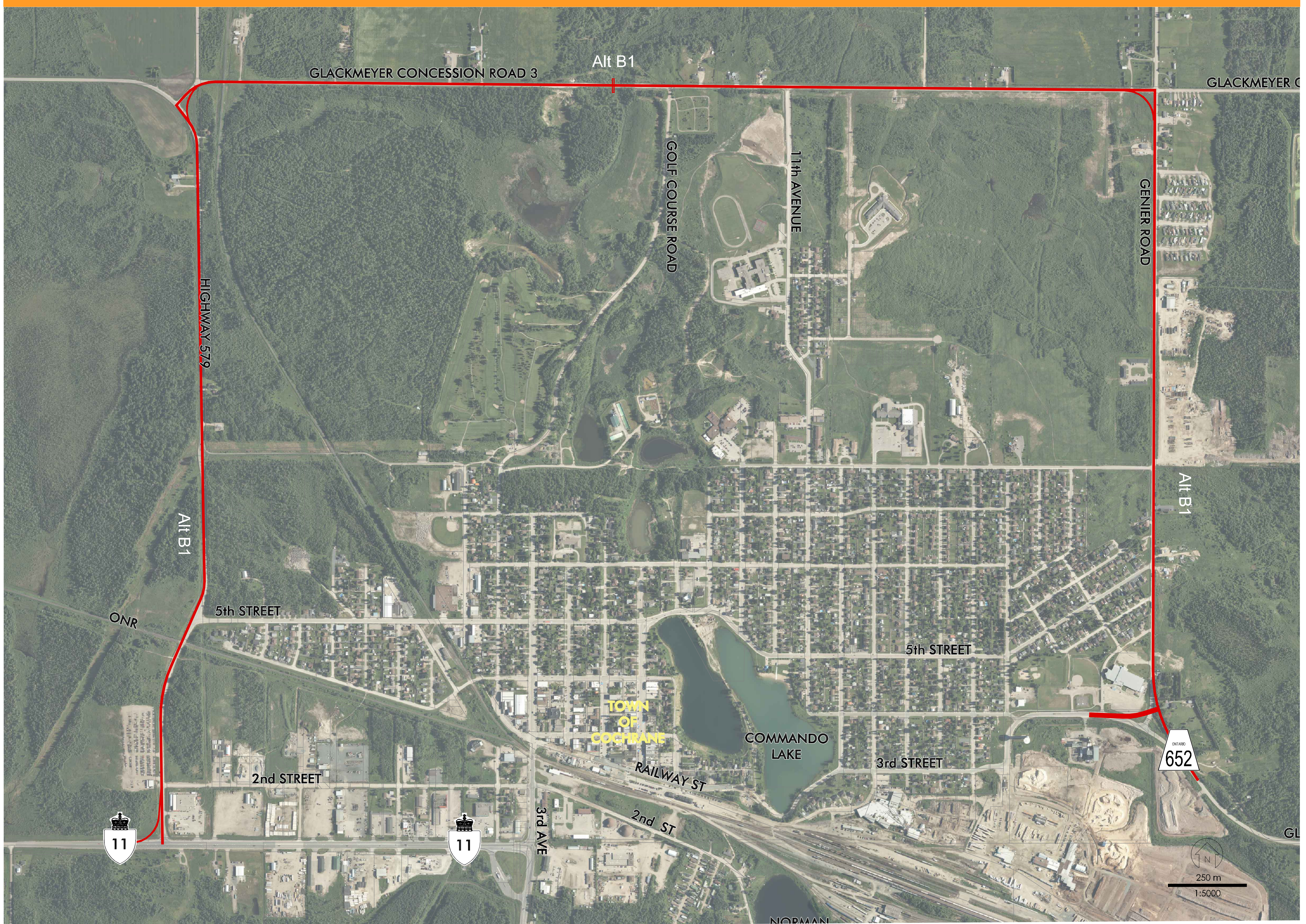




Alternative d'alignement B

Prolongement de la route 652, Cochrane

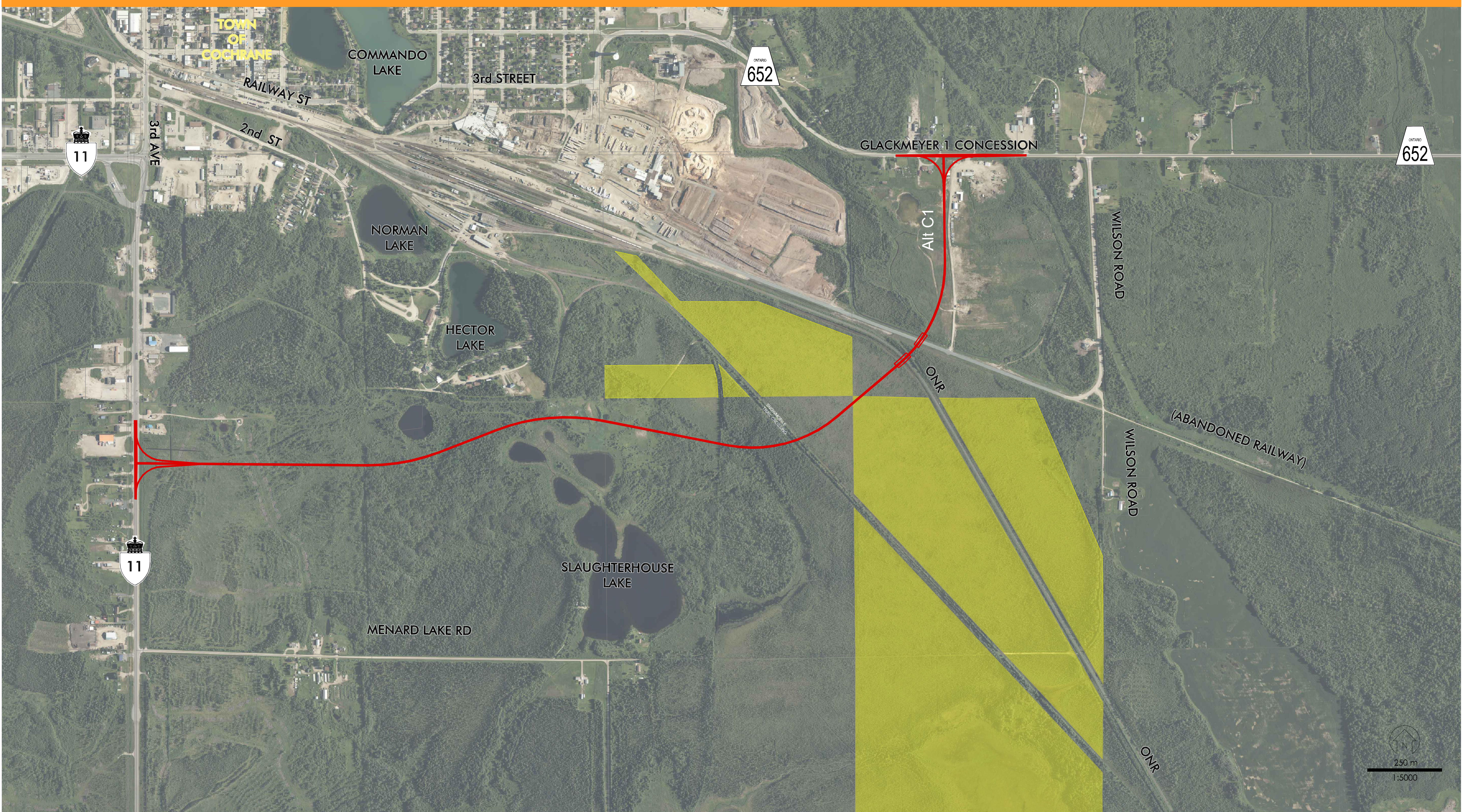
-  Alternative d'alignement
-  La réserve de conservation Nahma Bog and Poor Fens





Alternative d'alignement C1

-  Alternative d'alignement
-  La réserve de conservation Nahma Bog and Poor Fens

Prolongement de la route 652, Cochrane



Alternative d'alignement C2



-  Alternative d'alignement
-  La réserve de conservation Nahma Bog and Poor Fens

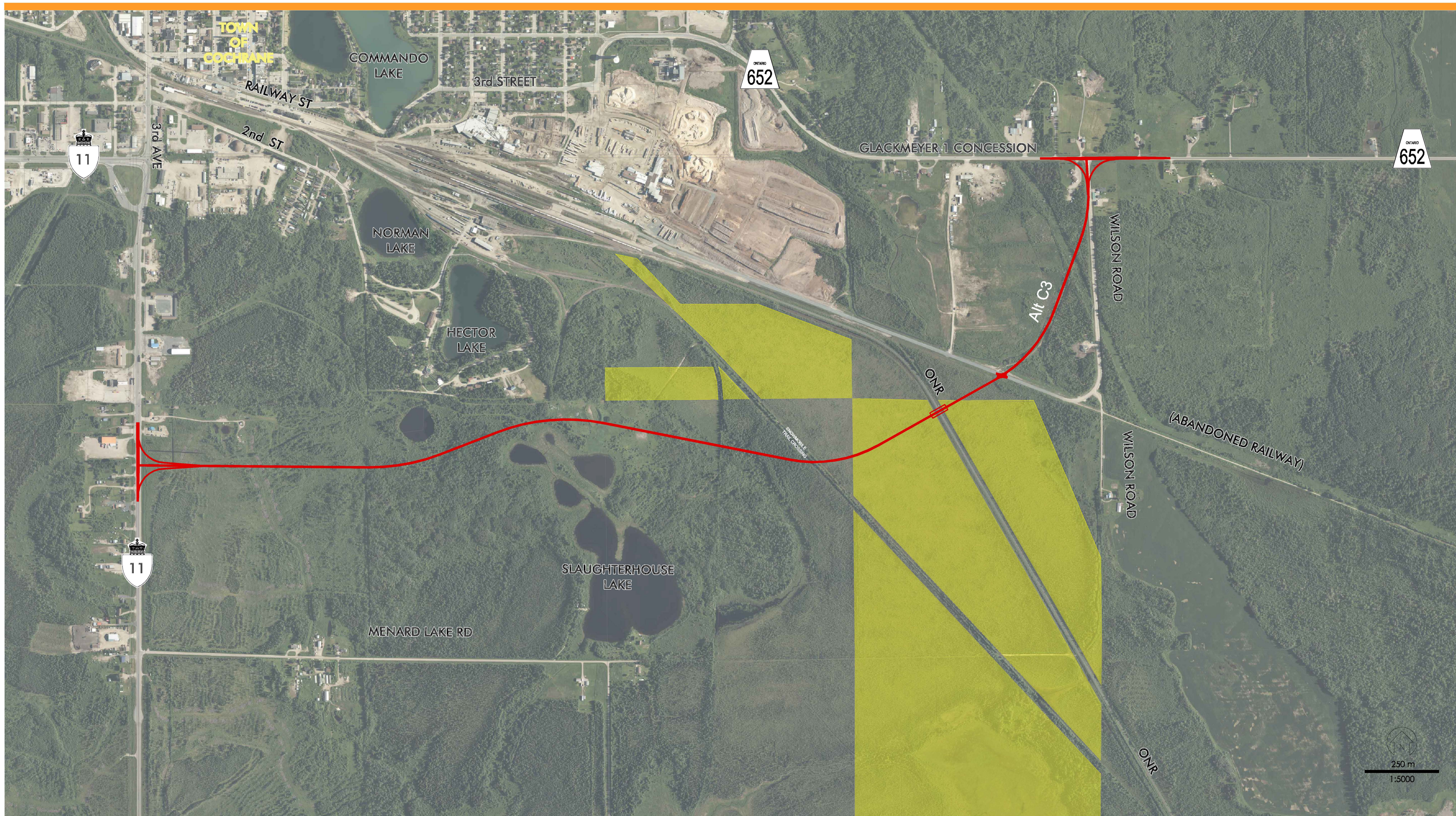
Prolongement de la route 652, Cochrane



Alternative d'alignement C3

Prolongement de la route 652, Cochrane

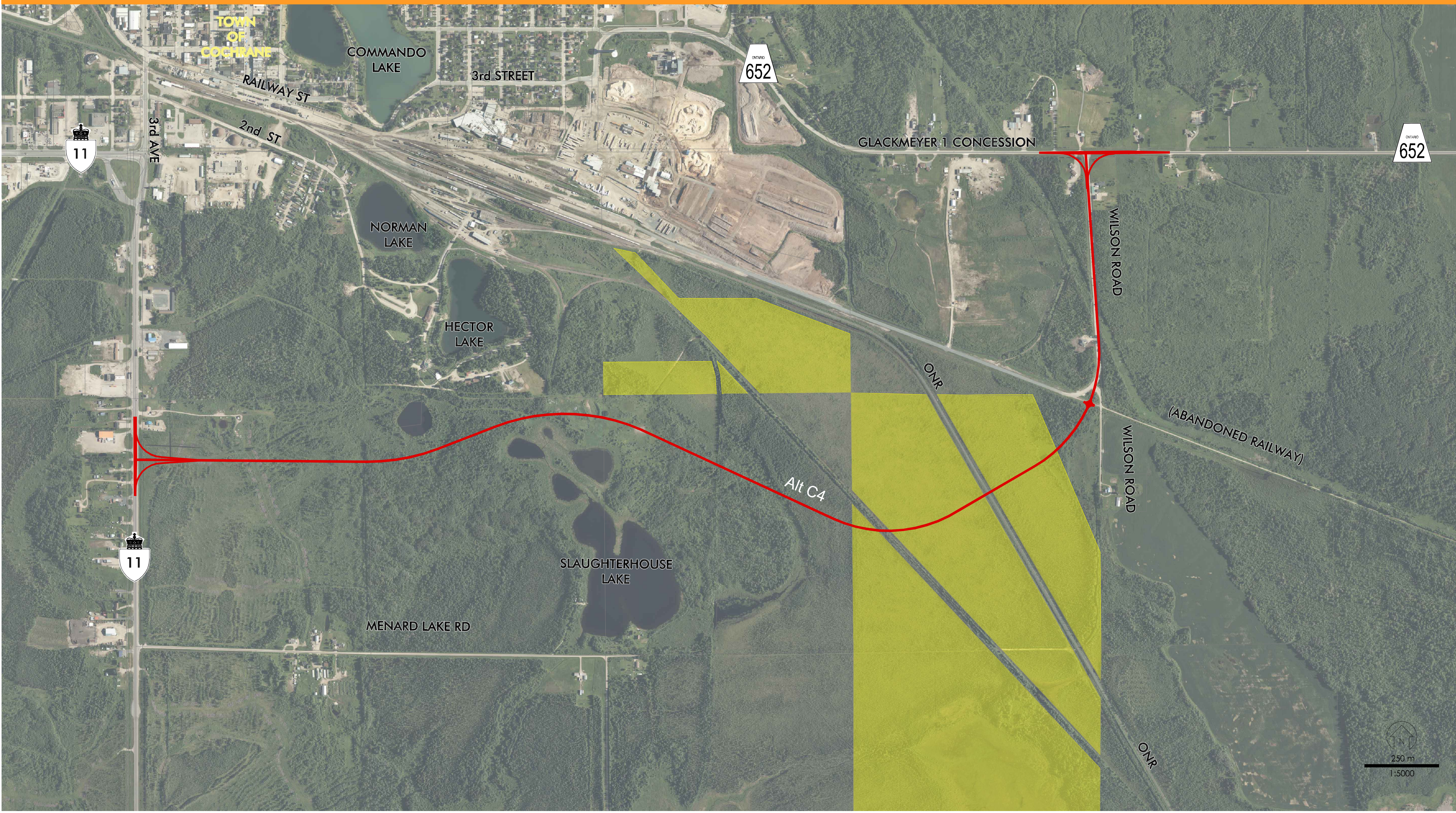
-  Alternative d'alignement
-  La réserve de conservation Nahma Bog and Poor Fens



Alternative d'alignement C4



- Alternative d'alignement
- La réserve de conservation Nahma Bog and Poor Fens

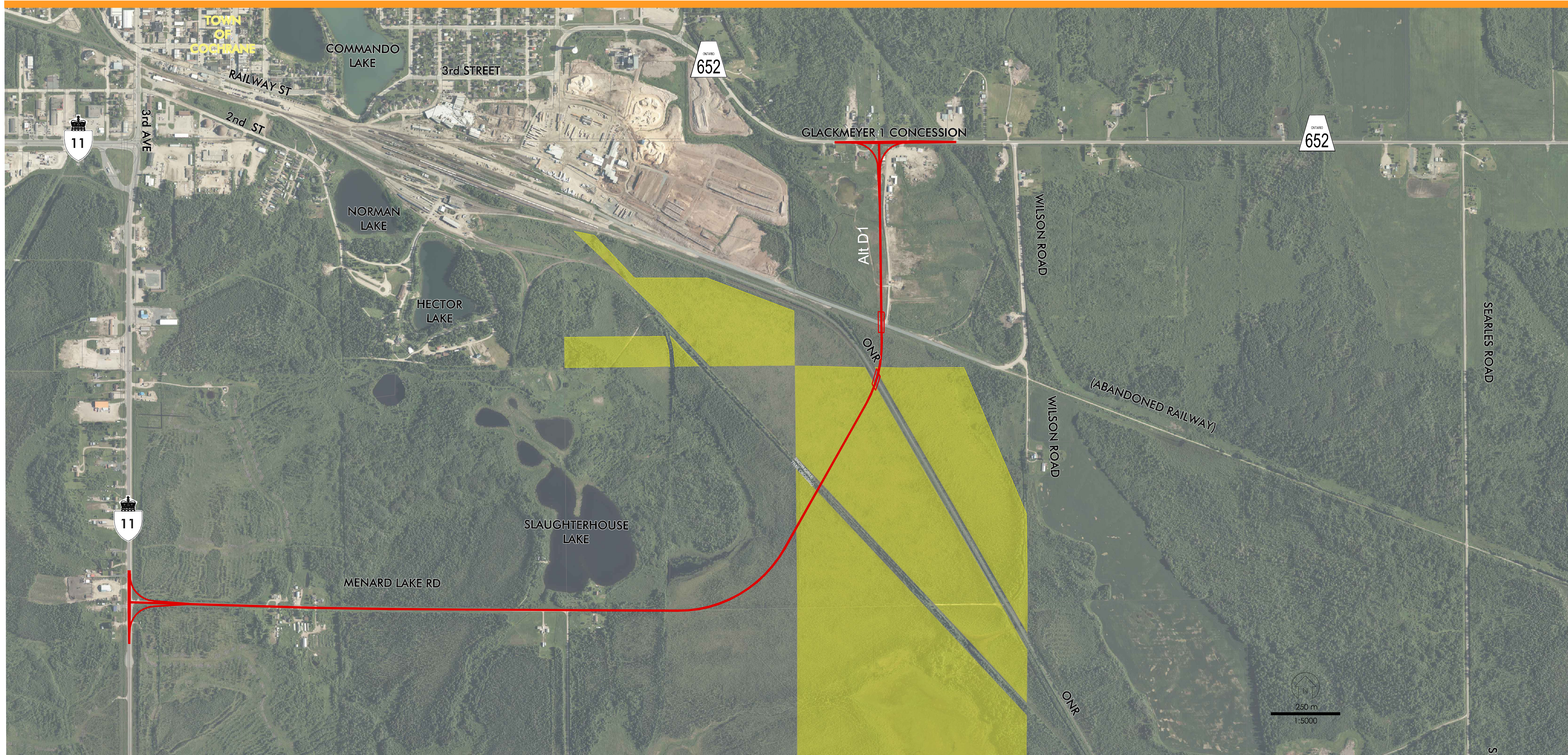
Prolongement de la route 652, Cochrane



Alternative d'alignement D1

Prolongement de la route 652, Cochrane

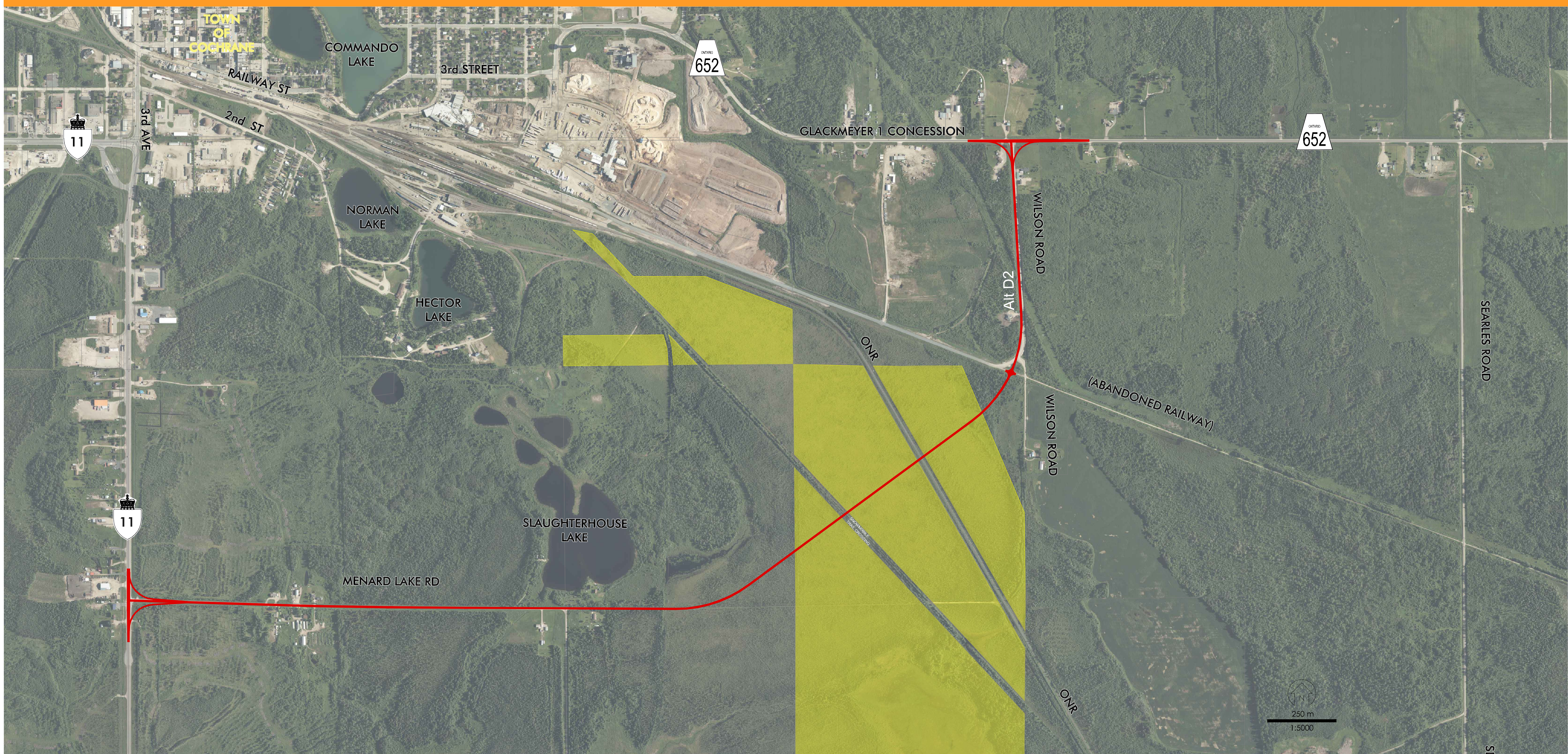
-  Alternative d'alignement
-  La réserve de conservation Nahma Bog and Poor Fens



Alternative d'alignement D2

Prolongement de la route 652, Cochrane

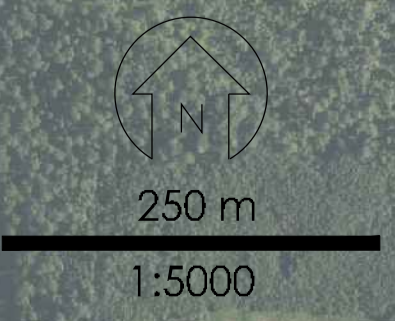
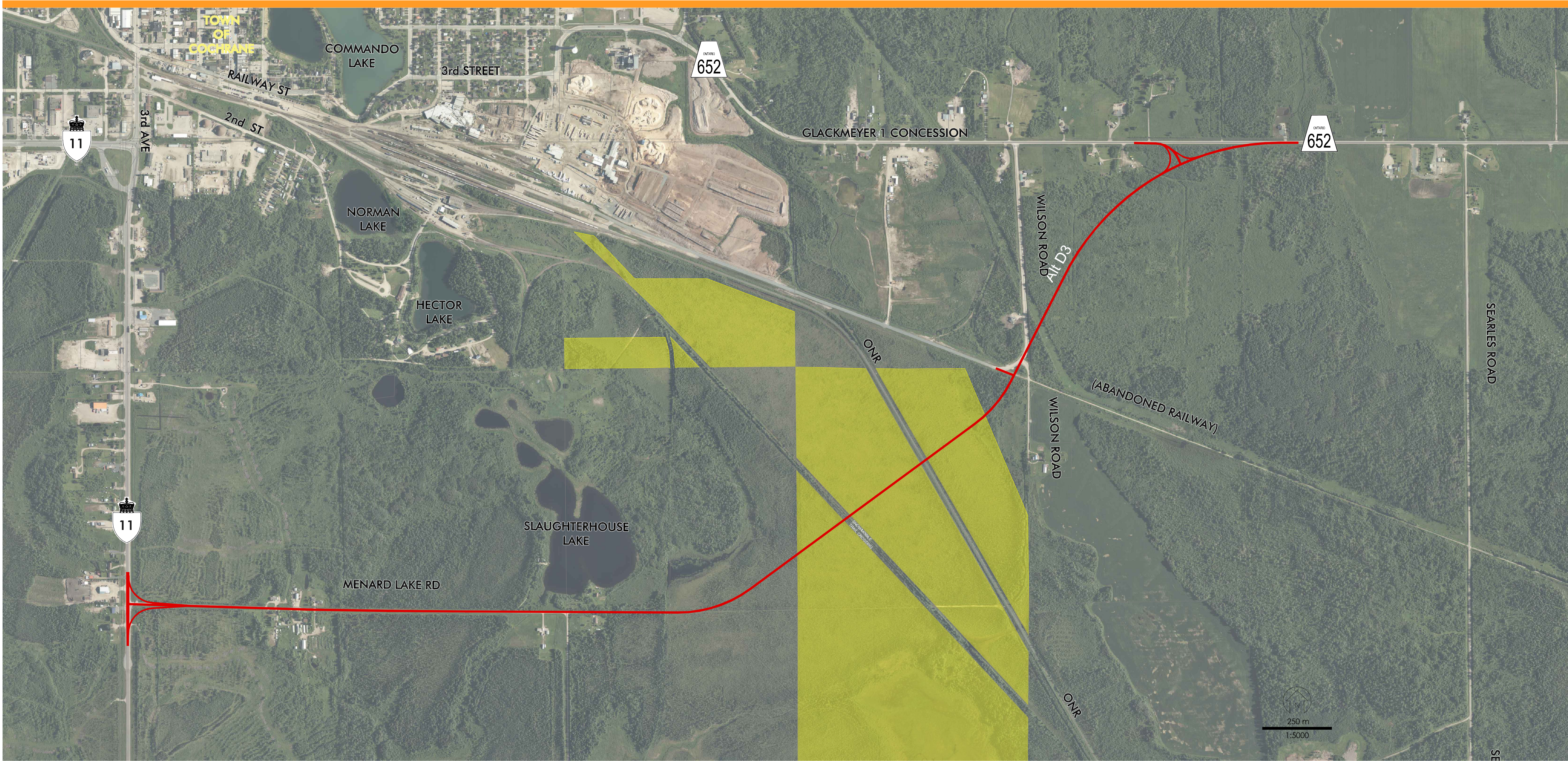
— Alternative d'alignement
■ La réserve de conservation Nahma Bog and Poor Fens



Alternative d'alignement D3

Prolongement de la route 652, Cochrane

— Alternative d'alignement
— La réserve de conservation Nahma Bog and Poor Fens



Alternative d'alignement E

Prolongement de la route 652, Cochrane

- Alternative d'alignement
- La réserve de conservation Nahma Bog and Poor Fens

