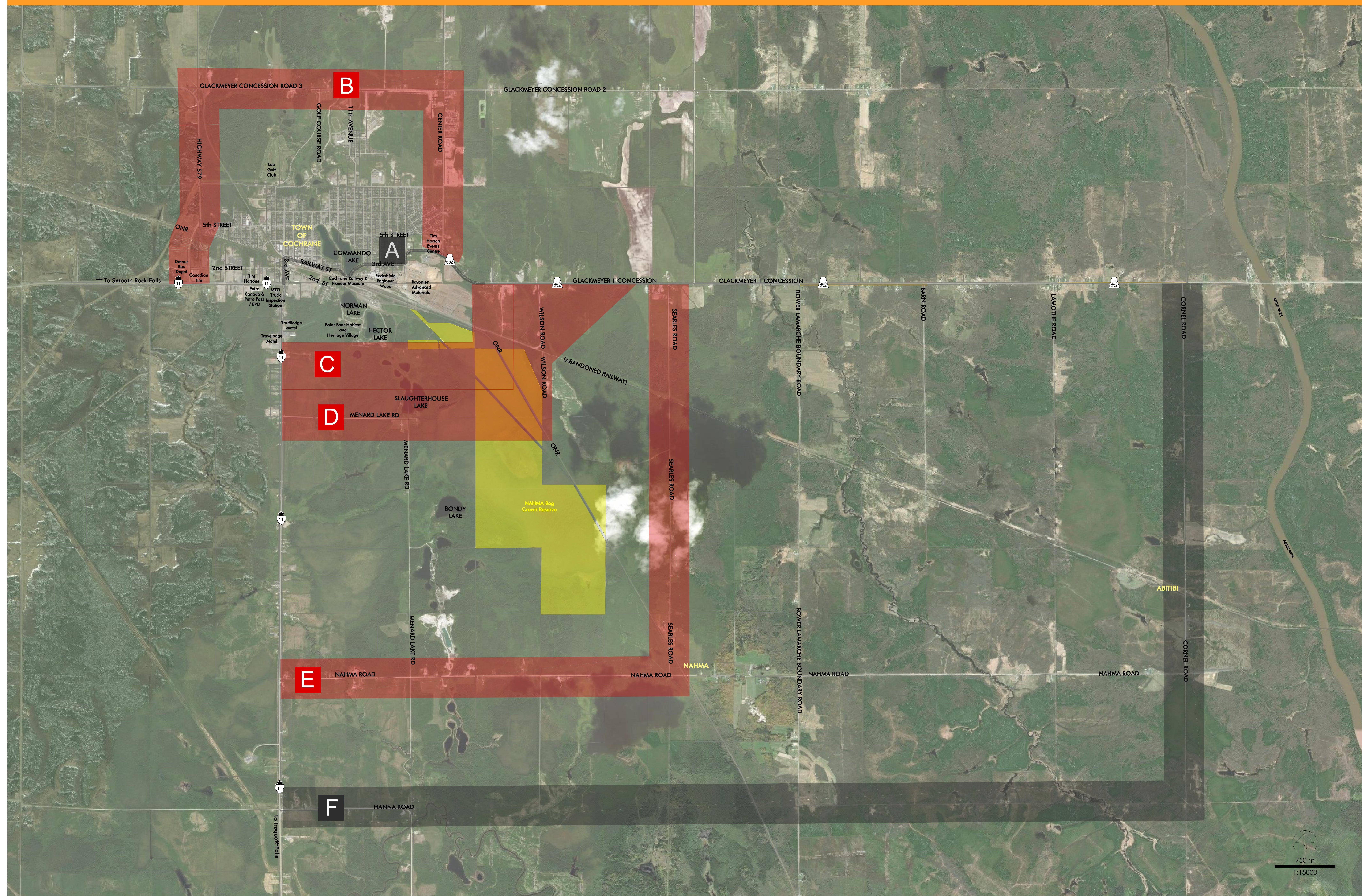


# Corridor Alternatives

Highway 652 Extension to Highway 11, Cochrane



- ✗ **A** Corridor A has been screened out because it does not meet the problem/opportunity statement of the project by:
  - Not addressing the concern of trucks travelling through the Town of Cochrane
- ✓ **B** Corridor B will be carried forward because it meets the problem/opportunity statement of the project by:
  - Providing an alternate connection between Highway 11 and Highway 652
  - Attracting enough commercial traffic to reduce the concern of trucks travelling through the Town of Cochrane
  - Providing an alternate route for dangerous goods
  - Providing separation between local and provincial traffic
- ✓ **C** Corridor C will be carried forward because it meets the problem/opportunity statement of the project by:
  - Providing an alternate connection between Highway 11 and Highway 652
  - Attracting enough commercial traffic to reduce the concern of trucks travelling through the Town of Cochrane
  - Providing an alternate route for dangerous goods
  - Providing separation between local and provincial traffic
- ✓ **D** Corridor D will be carried forward because it meets the problem/opportunity statement of the project by:
  - Providing an alternate connection between Highway 11 and Highway 652
  - Attracting enough commercial traffic to reduce the concern of trucks travelling through the Town of Cochrane
  - Providing an alternate route for dangerous goods
  - Providing separation between local and provincial traffic
- ✓ **E** Corridor E will be carried forward because it meets the problem/opportunity statement of the project by:
  - Providing an alternate connection between Highway 11 and Highway 652
  - Attracting enough commercial traffic to reduce the concern of trucks travelling through the Town of Cochrane
  - Providing an alternate route for dangerous goods
  - Providing separation between local and provincial traffic
- ✗ **F** Corridor F has been screened out because it does not meet the problem/opportunity statement of the project by:
  - Not attracting enough commercial traffic to reduce the concern of trucks travelling through the Town of Cochrane

## LEGEND

- Corridor Alternative Carried Forward (B, C, D & E)
- Corridor Alternative Screened Out (A & F)
- Nahma Bog Crown Reserve